



£2, free to Members

Barkham Newsletter

Issue 149 Autumn 2024

from the Barkham Village Residents Association

QUIZ NIGHT!



Saturday 5th October

Fish & Chip Supper included

Tickets: £15 each from Gill Powell

social@barkham.org.uk

LICENCED BAR

No need to bring a bottle!

ANNUAL GENERAL MEETING

The BVRA will hold its AGM at 7:30pm on Thursday 7th November in Barkham Village Hall.

All residents of Barkham are welcome to attend. **We are always looking for fresh blood to join the team, especially a new treasurer.** Please send your nominations for any post to reach the Secretary by 17th October

In
this
issue...

- *Local Plan Update* *Page 6*
- *Solar Farm is coming* *Page 8*
- *Glitch - A play about the Post Office Scandal* *Page 13*
- *"What you got?" More from the village Detectorists!* *Page 14*

Editorial



Since last time, we have enjoyed the Euros and the Olympics and we have endured a general election, the near assassination of a US presidential candidate and other events far too unsavoury to mention here! Despite the variable weather we have been having this summer, I hope you have made the most of it!

In the BVRA we are turning our minds to the AGM on 7th November. You will see a formal notice on the front page.

Steve Young has been our treasurer for two years and also our ‘central wholesaler’ for the Newsletter distribution for 13 years. We are extremely grateful for his service over these years. Steve has recently moved out of the village so we are looking for new people to step into both these roles. Please take a look at the adverts on Page 3 opposite to see if you might be able to help with either of these roles.

The next social event is the Quiz night on Saturday 5th October. Full details are also shown on the front page. I do hope you will be able to come.

On Page 6 Borough Councillor, Adrian Betteridge, updates us about

the status of the Local Plan, which will affect future development in the village.

Also, soon to have a major impact in the village is the imminent arrival of the Solar Farm. In this issue we are starting to run a series of articles about this development on land behind the church. See Page 8.

A year or so ago, School Road was closed to through traffic on a trial basis. Has this affected you? Now Wokingham Borough Council is consulting about making this permanent. If you want to air your views then follow the link in the DevWatch update opposite.

Following the article in the Winter issue about *Mrs Stubbs and the Post Office*, we follow up with an article about a play on the same theme. Called *Glitch*, it was written by members of Reading University, Page 13.

The Scout Field is mentioned in *Wild About the Coombes* on Page 10. I wonder whatever happened to the Scouts group. We ran an article about the Guides in the last issue. If you are involved with the Scouts and want to promote their activities then feel free to contact me.

On Page 14 we have the second article in our series *What you got?* about our local detectorists.

Also on the theme of people with interesting jobs or hobbies, on Page 12 we hear about John Lewis and his interest in aircraft.

Did you notice the poppies, see front page, on the grass verges in Arborfield in June? I heard that some complained about the loss of sight lines and some thought it a waste of money! But at least they were very pretty for a couple of weeks.

Contents

DevWatch	3
Parish Council	4
Borough Councillors	6
Quiz	7
Solar Farm	8
Church	9
Wild About the Coombes	10
Social Matters	12
My Life in Aviation	12
Glitch	13
“What you got?”	14
35 Years Ago	15
Alan’s Patch	17
Quiz answers	17
Clubs and Societies	18
Musical Events	20
BVRA Admin	22
Activities & Events Diary	23

Email Updates

As well as our newsletter we are increasingly using email to keep in touch with members. It is important we are kept up to date with your details. If your details have changed or you aren't getting emails from us, use our member details form on the website

<https://barkham.org.uk/member-details>

to advise us.



We will confirm any request you send to us. Also to ensure you receive our emails please add barkham.org.uk to your safe senders list. If you are unsure how to do this, please email webmaster@barkham.org.uk for advice.

DevWatch Update



Several relevant outstanding planning applications are pending where a decision is awaited. The WBC Planning Committee is due to meet on the 14th August. This is after the date that this newsletter went to print but maybe decisions will be made on -

1. 232621: 60 houses on backland to the rear of the Leathern Bottel on Barkham Road: and, of course, a planning alert was sent out by us on the new application

- (241556) to extend the pub and add guest accommodation in the grounds using the same access
2. 222306: 350 houses at the rear of Evendons Lane (with a Care Home) with accesses onto Barkham Road and Blagrove Lane.
3. 231351: A 64 bed Care Home at 171 Evendons Lane.
4. 232490: 50 houses adjoining Langley Common Road close to the Arborfield Green roundabout. See the previous alert [2023-11-14 Planning Application For Homes Off Langley Common Road \(barkham.org.uk\)](#)

And, of course, at the time of writing we are also still waiting for publication of the Local Plan proposals. See Page 6 for an update by the Borough Councillor.

Other subjects of interest are:

- a) The question of whether vehicular access to the Coombes ought to be restricted. Off road and other vehicles not apparently owned by anyone with an interest in adjoining land have been using the land to

the detriment of the ground surface and potential danger to pedestrians, and

- b) Should the trees at Barkham Square be protected by a TPO? That property seems likely to become the subject of a development application but the owners have, I am told, not being willing to allow access for a tree survey to be carried out.

Barkham Parish Council will be putting both subjects on the agenda for their September meeting. However whilst BPC have no remit to make decisions on either matter nevertheless their backing would be helpful in a referral to WBC.

- c) A DevWatch alert was very recently sent out by us on the impending review of the School Road closure. So if you have views on that make them known to WBC before the September 22nd. Details can be found in the DevWatch section of the website <https://barkham.org.uk/devwatch/archive/listing>



There was a Developer's public consultation on the proposal to build 95 houses on the land immediately behind the Coombes School. It would have access onto the section of School Road accessing the roundabout. So, a planning application is likely to be made shortly. There had been a previous – larger – application by another developer that had been refused – but the refusal was not taken to appeal.

Dennis Eyriey

BVRA Treasurer

We urgently need someone to replace Steve Young our retiring treasurer.

Essentially the role involves:

- Manage the finances
- Prepare accounts for inspection
- Collect advertising revenue
- Manage insurance needs
- Attend committee meetings

If you think you might be willing and able to perform this key role then please make yourself known and we will explain more about what's involved.

chairman@barkham.org.uk

Membership Secretary

Manage the membership and distribution of the Newsletter

Key points are:

- Maintain the contact database
- Manage the payment of subscriptions mainly through the Direct Debit scheme
- Manage the team of Wholesalers and Distributors
- Provide distribution lists for each quarterly magazine distribution
- Attend committee meetings

If you feel you could help then please contact chairman@barkham.org.uk



Update from Barkham Parish Council

Planning round-up

Local Plan Update

Barkham Parish Council has heard that the Local Plan Update (LPU) is due to go before Wokingham Borough Council in September. If this is the case, a consultation should follow shortly on the sites included for development.

The Deputy Prime Minister and Secretary of State for Housing, Communities and Local Government – Angela Raynor – has now delivered her much trailed statement concerning changes to the National Planning Policy Framework (NPPF). This is the overarching planning document for England. The changes are intended to streamline the planning process to increase the rate of build for the much needed housing across the country. Key provisions are the method of calculating housing need will be brought up to date to reflect the size of existing communities, housing targets set by central government will be mandatory and the collective total of local targets will be increased from 300,000 to around 370,000 per year - an increase of 25%. The proposed mandatory housing targets quoted for Wokingham Borough will be increased from 750 to 1300 dwellings per year across the Borough- an increase of 73%. How this will be managed under the LPU remains to be seen.

School Road Closure Consultation

WBC are carrying out a final consultation on the closure of School Road. School Road was closed by WBC in 2022 under an experimental traffic regulation order (ETRO).

WBC are now proposing to make the closure permanent. Details of the proposal can be found at <https://www.wokingham.gov.uk/roads/road-maintenance/traffic-regulation-orders-tros>.

A consultation is now being held to seek residents views. The consultation period ends on September 22nd. Residents can submit any comments to WBC on the proposal via email to TM.Consultations@wokingham.gov.uk or by post to Wokingham Borough Council, Traffic Management Team, Environment, P.O. Box 153, Shute End, Wokingham, Berkshire, RG40 1WL.

The Parish Council encourages residents to submit any comments they have on the proposals to WBC.

Arborfield Green Community Centre

The working group chaired by an Arborfield Green resident has held consultation events to gauge what residents would like included in the new Community Centre. The results of these are currently being compiled and reviewed. Crest will then start the design work on the plans ready for review by the stakeholders. It is hoped that this will be completed by September.

Recent Developer public exhibition for development off of School Road

A developer, Croudace Homes, recently held a public exhibition, to present their draft proposals for development on land north of School Road. Whilst Barkham Parish Council was not notified directly by the developer of the exhibition, the Council was made aware by a resident of School Road and by Arborfield Parish Council. The BVRA Development Watch were also made aware, and they issued a development alert.

The Council now await the full planning application being submitted, which is when the Council will consider the application. The BVRA will be kept updated to enable the team to issue any alerts that are required, so that residents can submit their comments.

Medical Centre

Barkham Parish Council are interested to see how Wokingham's new MP Clive Jones, who put fixing the NHS and care at the heart of his general election campaign, will tackle the difficulty in accessing health facilities in Wokingham.

From the Office of National Statistics (ONS) Wokingham has built and completed 10,200 homes in the borough between 2009 to end March 2023. From the latest census conducted by the ONS, this has resulted in a population growth of 23,100 (rounded to the nearest 100) people between 2011 and 2021. As far as the Parish Council is aware, no new health centres have been provided as part of any development site. How can the existing GP surgeries take all of these extra people,

without compromising accessibility to health care provisions?

As well as campaigning for the rebuild of Royal Berkshire Hospital, the Parish Council would like to see Mr Jones push for a new medical centre, preferably, as part of the Arborfield Green Development. A medical centre was included as part of the original plans for the development, with funding ringfenced in the S106 agreement, but has been removed due to the Clinical Commissioning Group (CCG) saying no to a new centre.

The Parish Council has raised the removal of the medical centre as part of the plans for Arborfield Green several times with both Crest and WBC, but as the CCG will not allow them to include a new medical centre as part of the development, there is nothing they can do. The Parish Council would like to see the plan for a medical centre re-instated as part of the Arborfield Green Development, as part of Mr Jones' calls to 'fix' the NHS.

The Coombes Woodlands

The Coombes Woodland Committee has set up a new website for the Coombes Woodland. The Website address is <https://thecoombeswoodlands.com>

This website will be updated regularly with what is going on in the woodlands, and it also has a link for volunteers who would like to help manage The Coombes to sign up.

The volunteer group is nearly ready to be set up, First Aid courses have been undertaken by members who will be organising the volunteer group days. Policies, procedures and other relevant forms are being finalised, with the view to having the group set up and ready to

commence by Autumn.

Further tree works identified in the tree survey will take place on Thursday 5th September 2024, so please do not be concerned if you see forestry work being undertaken. The relevant permissions for this work have been sought and have granted by WBC.

If you are interested in becoming a volunteer, please contact BPC's new deputy Clerk, Natalie, via Deputyclerk@barkham-parishcouncil.org.uk to be added to the list to be contacted once the group is ready to be formed or register through the new website.

Trial of fly tipping cameras

The Parish Council in partnership with WBC, commenced in April, a trial of deploying cameras along Commonfield Lane to catch any incidents of fly tipping. If successful, the Parish Council will consider rolling the cameras out to further hot spots within the parish. Early results are that fly tipping in the lane has reduced, although the cameras have not caught any events of fly tipping so far.

History Books

The "Barkham A History" book can be obtained from the Clerk at £8.50 each or from Henry Street Garden Centre. These will make ideal presents for anyone who is new to the area and does not already own one.



If you have any questions then please contact the Parish Clerk at clerk@barkham-parishcouncil.org.uk

FLO PLUMBING & HEATING
IN AND AROUND READING

BOILER SERVICING TAP REPLACEMENT LEAK REPAIRS BATHROOM INSTALLATION

Local, reliable small business. Fully insured and gas safe registered. No obligation quotes.
T: 07540 996385 E: dan@floplumbingandheating.com W: floplumbingandheating.com

The advertisement features a dark blue background with a stylized orange and blue flame logo on the left. Below the main text are four icons representing different services: a wrench and screwdriver for boiler servicing, a tap for tap replacement, a water leak for leak repairs, and a bathtub for bathroom installation. A 'safe' logo is in the bottom right corner. The footer contains contact information and a disclaimer.



The Next Local Plan for Wokingham

As I write, I am expecting that on 19th September, Wokingham Borough Council will be considering for approval the Local Plan for Wokingham for the 15 year period 2026 – 2041. The plan and its supporting documents cover many aspects of how our area will grow over that period, but what will be in the forefront of most people's attention will be where new houses are proposed to be built.

The process has been complicated by the recent general election and a consultation by the new government into planning policy and housebuilding targets. There is a lot to be said about the current and proposed government housebuilding targets for Wokingham, the failure of targets to make housing affordable and the challenges that sustained building creates for the infrastructure we can influence locally (transport, schools, shops and more) and that which is outside of local control, most notably NHS capacity. However, in this piece I want to talk about the Local Plan we are about to review.

The review in September is the penultimate step in a process which started in 2015, included a public consultation on a draft plan at the end of 2021 and will conclude with review by a government inspector.

House building targets are determined by a formula set by the government and, despite lots of political claims otherwise, this requirement had not changed in

recent years. Every available avenue has been pursued to reduce targets in Wokingham to a level to meet demand from local people, but with the last review by the Conservative government failing to deliver on this and the new government set on increasing targets, there is no prospect of targets being lowered.

Councils are required to publish a plan showing where the required number of houses are best located. Whether we like it or not (and almost everyone doesn't), the targets set for Wokingham will mean building on greenfield sites. Failure to agree a plan could result in a free-for-all for developers to build wherever they want and without contributing to local infrastructure.

The question of where to build started some time ago with landowners proposing land for development, from which the Council determined a plan which it believes best meets the needs of the area. The draft plan from 2021 laid out the Council's view at the time and can still be read on the Council's website, together with the results of the consultation.

When the Liberal Democrats took over the council in 2022, we looked at how the plan could be improved and the plan being submitted for final approval will include significant improvements to protection of green spaces and landscapes where we can, environmental standards for new homes and the amount of affordable housing. What isn't possible, however, is to make fundamental changes to the major locations proposed for development in the draft plan. These locations were justified by the council as the

best choices in 2021 and are still being promoted by the landowners and the circumstances have not changed significantly. Big changes to locations in the current political climate, would most likely result in both the original and new sites being developed. It would also mean the new plan being delayed beyond its start date, with the open season for uncoordinated development as described above.

Hall Farm in Arborfield and Newlands Parish was the largest development site in the 2021 plan and I am expecting it to appear in some form in the updated plan. There may be other locations in our area, which will have been decided as the most sustainable sites for development. It is unlikely that anyone will welcome development in their locality, but opposing everything is not an option.

As a borough councillor I will be scrutinising the proposals to ensure that they are necessary, well-founded and include the right provisions for timely and sufficient infrastructure, where this is within the power of the council. This needs to include schools, transport links of all kinds, greenspace and community facilities. Local medical facilities are beyond the council's control, but I will be doing whatever I can to ensure that the council lobbies the NHS to establish appropriate cover.

I hope that my colleagues across the council take a similar approach and do not campaign for the unachievable. Please do give me your views once you see the plan, which should be available one week ahead of the council meeting on 19th September.

Adrian Betteridge
adrian.betteridge@wokingham.gov.uk

D-Day for Barkham Hookers

Having decorated Barkham and Wokingham over the last 10 years with various crocheted decorations, my merry band of Barkham Hookers and I decided to make a special effort to help commemorate the 80 years since D-Day in 1944.

In recognition of the part played by thousands of horses from the Remount Depot in the old Arborfield Garrison, we adorned sculptor Amy Goodman's 3 stunning horse sculptures with over 600 purple poppies (to represent animals killed in wars) on saddles and bridles as well as 70 large poppies on stalks around the horses themselves.

We also decorated over 20 local post boxes with soldiers, helmets, planes and poppies. We raised nearly £900 for the British Legion through the sale of the giant poppy stalks as well as selling many bespoke crocheted poppy brooches made with military buttons from the RAF/Navy and many other regiments.

Unfortunately, within 24 hours of the saddle cloths being installed, 2 of them were removed. We never found out where they went or who took them; we just hope that they were used and enjoyed not just discarded.

They took hours of work and are made to be enjoyed by everyone. We were so touched by the amount of support we received from locals as well as help from the local and national press. Despite not getting them back we will not be deterred so watch this space for the next event!

Gaynor White

Ed: Enjoy the photos dotted through the magazine!



The Quiz

Since last time, we have enjoyed the Euros and the Olympics, and we have endured a general election. Some of my questions are inspired by these topics.

1. Who was the first ever labour prime minister?
2. How many labour prime ministers have there been?
3. Which constituency had the smallest majority in the recent general election?
4. For which country was the fastest ever goal scored in the Euros football tournament?
5. Which country received the most red cards at the Euros?
6. Which non-hosting country won the Euros and in which year, despite not qualifying in the first place?
7. What is the connection between the final of the Euros this year and the 1936 Summer Olympic Games?
8. Who sang the song *L'Hymne à l'amour* at the opening ceremony for the Olympics in Paris?
9. Who won the first ever Gold for his country in the men's 200m?
10. On the same theme who won the first Gold for her country in the women's 100m?

Answers on Page 17

Where in Barkham?

Maybe you've seen this gate on your walk but do you know where it is?

Answer on Page 17



BARKHAM SOLAR FARM – UPDATE 1

With excavations now evident in the Solar Farm fields, we hope to run a series of short updates over the next few editions. These updates will be written in collaboration with the Wokingham Borough Council Project Team.

Before construction of the Solar Farm can commence, a number of pre-construction investigations are required to provide input into the final detailed design of the project. One such requirement is to assess the potential for underlying archaeology. These are the excavations that many of you have asked about which are being undertaken by Cotswold Archaeology.

The archaeological surveys are a requirement of the planning permission granted for the solar farm (Condition 9). Whilst it is not anticipated that there will be any meaningful finds on the site, the extent of the archaeological interest and the need (or not) for mitigation will not be known for certain until the surveys have been completed. The Project Team is working closely with the County Archaeologist to ensure appropriate coverage of the survey work in order to satisfy the planning requirements.



Fig 1

The purpose of these studies is not to impede a project but to make sure that any meaningful archaeology

present is recorded and, where appropriate, protected. Protection may simply entail moving structures to avoid any sub-surface features or modifying the design of the foundations.

A geophysical magnetic survey - well suited to detecting fired or magnetically enhanced features such as ditches, pits, kilns, sunken buildings and industrial activity - has already been completed across the Solar Farm fields. These results have been used to guide the positioning of the archaeology trenches – all 171 of them.

If you think archaeology is purely genteel working with trowels and brushes then be prepared for a bit of a surprise. Diggers fitted with 2m wide buckets – Fig 1 - are being used to open 30m by 2m trenches as shown in Fig 2.



Fig 2

These are excavated to what is referred to as ‘the top of the natural’ – the geological layer in which any evidence of human activity would be visible. In these fields, this is delineated by the transition from top or sub-soil onto the underlying London Clay.

Any features of interest suggested by changes in colour, texture and/or composition of the deposits will then be further investigated by hand excavation.

So far, the finds have mostly been

limited to a plethora of orange-brown terracotta drainage pipes that have been dug into the top of the clay layer. Fig 3.



Fig 3

The archaeological work is expected to continue until the end of August 2024. Any required measures of mitigation will be agreed with the County Archaeologist as the digs progress. Following completion, a report will be written setting out the results.

Main construction is still on schedule to begin mid-2025.

Other pre-construction actions include landscape planning (Conditions 5, 6 and 15), tree protection schemes (Condition 7), provision of a safe pedestrian crossing of Barkham Ride (Condition 11) for the new Greenway (Condition 10), construction of a suitable site access on Barkham Ride (Condition 12), preparing Construction Traffic and Environmental Management Plans (Conditions 13 and 14) and establishing a community liaison group (Condition 23). More about all this next time.

If you have any questions then please contact the Parish Clerk at clerk@barkham-parishcouncil.org.uk or phone 0118 976 2089.



St James' Barkham

New Rector!

We mentioned in the Spring that Piers Bickersteth had retired as Rector, after 25 years serving our parishes and the wider Arborfield and Barkham family of churches. We are now delighted to be able to share the very good news that the Bishop of Oxford has agreed that Andy Kearns will become our new Rector.



Andy has been serving as a minister of Arborfield Church for a few years now, so is well known to our churches and in the local area. He has previously served in churches in Tooting, Maidenhead, and Lausanne. Way back, he used to work as a physiotherapist.

We are praying for Andy as he steps up to this wider responsibility, and we eagerly await details of when his formal installation service will be. Meanwhile, the Rectory in

Arborfield is a hive of activity as the Diocese carry out lots of long overdue works before Andy and his family move in.

In practice, things at Barkham Church won't feel very different, as Julian and I continue as ministers here, and Andy continues mainly to focus on his day-to-day work at Arborfield. But we do look forward, hopefully, to having him visit and preach from time to time.

We also look forward to welcoming Iain Lingwood who is moving down from Stafford, with his family, to begin work as the new Minister of Church at the Green on Arborfield Green. It really is all change for the wider team.



As we head out of the summer holidays into the new term, we'd love to invite anyone going into school years 6-9 to join us at Friday Club. This takes place on term-time Fridays, from 7-8:30pm, almost always in Barkham Village Hall. We have a great crowd of youngsters who join us to begin

their weekend with games, crafts, snacks, and a short talk from the Bible. Friday Club will resume on 13 September. If you'd like to know more, please do just drop me a line david.horrocks@abch.org.uk or call the Church Office on 0118 976 0285.

As ever, we'd love to see you at Barkham Church on any Sunday, at either 10am or 6pm. Everyone is always welcome!

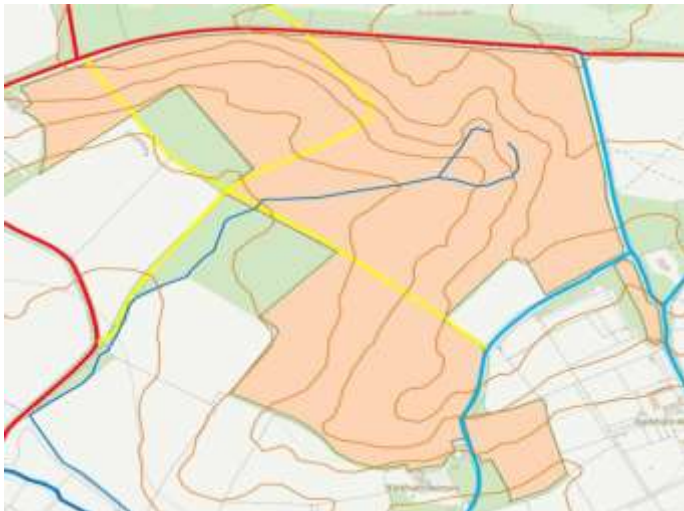
David Horrocks



Wild About the Coombes

The Coombes is a remnant of the Forest of Windsor, used as a hunting ground by William the Conqueror. As such, most of it is now officially recognised as Ancient Woodland, but not all.

The Coombes landscape map shows the parts that are designated as Ancient Woodland in brown, with other woodland in green. The bold lines are Public Rights of Way, red being byways, blue are bridleways and yellow footpaths. The red line going from left to right near the top is Coombes Lane. The blue line down from it is the bridleway that passes Barkham Manor Farm and continues to Barkham Manor. Off that, heading towards the centre at the bottom is the bridleway, in blue, passing the Old Rectory and emerging onto Barkham Road near the bridge.



So how come there are parts of the Coombes woodland that do not qualify for the Ancient Woodland designation? In England, Ancient Woodlands are defined as areas that have been continuously wooded since 1600. Under the Enclosure Act, about 120 acres of Windsor Forest were made available for allotments in 1817, some of which fell within the area now known as the Coombes.

Half of the allotments in the Coombes were abandoned and nature took its course, reverting to woodland through the first half of the 1900s. However, their period cleared of trees for cultivation disqualified these parts of the Coombes from designation as Ancient Woodland. Nowadays those areas appear much the same in character as the rest of the Coombes woodland.

Over the last few years I have been watching with great interest another area of the Coombes going through

natural woodland regeneration. It appears on the map as a white rectangle at the junction of the yellow public footpath and blue bridleway. Being coloured neither brown nor green reflects its recent status as open land.

This area was, and still is to many, known as the scout field. It was kept clear for scouts to use for camping, and I used to take my children (now middle-aged) there to play football and cricket on its expanse of mown grass.

There is a well-worn path running diagonally across the scout field, cutting the corner between the bridleway and footpath. On the side towards the junction, the land is now heavily overgrown with brambles, bracken and a variety of self-sown sapling trees, among other species, as shown in the photograph including a well-established Silver Birch. Also growing through the brambles, which conveniently protects them from the wildlife inclined to strip and eat their young bark, are saplings of other species such as Oak and Sweet Chestnut.



Chestnut and Oak Saplings

The path beside the pictured silver birch has patches of



Established Silver Birch

brambles on both sides, each sending runners towards the other. This is making the path difficult to walk along

and another path is forming to bypass the brambles.

As the growth closes in from all sides of the ‘field’ and spreads across it, trees will mature and fill the area. These will shade the undergrowth and in turn reduce its density. People and animals will continue to make informal paths through what is fast returning to the woodland that it would have been before being cleared for the scouts.



Path Becoming Blocked

There are so many trees already growing there, though mostly still only saplings, that the area has joined the rest of the Coombes woodland in being subject to an all species Tree Preservation Order.

Nature is amazingly good at increasing biodiversity and balancing ecosystems, provided people allow it to do so. It seems to make a much better job of it if left to do it its own way.

Joe Wild



...because you don't have to be great at singing for singing to be great for you!

Do you love to sing, but for one reason or another you can't (or wouldn't dare) join a choir? Then **Sing for your Self** is the group for you! We are a truly local, fun singing group, where EVERYONE is welcome, no matter their confidence or ability levels. There is no pressure, no performances, no demands and no expectations. With bags of energy, enthusiasm and empathy, my aim at **Sing for your Self** is always to create a welcoming atmosphere of inclusion, trust and fun, where everyone can relax, sing confidently and leave the session feeling uplifted and happy.

We currently run 4 sessions a week in Arborfield, Finchampstead, Wokingham and Winnersh. After a warm-up, where we leave behind the stresses of the outside world and our daily lives, we sing along to well-known songs from across the decades, from '60s right through to modern day. We learn one song more thoroughly each week, pausing to go through any tricky bits, and then we just enjoy singing them out! After our 3 daytime sessions we enjoy some refreshments together, bringing some often needed social contact into the day as well. Our sessions bring together men and women, from 18 to 80+ and provide some great laughs. And watching new friendships bloom amongst our singers is a truly wonderful bonus! Sessions are £5 each on a Pay As You Go basis, payable in cash or online, with donations for refreshments during the daytime sessions. Inclusion is truly important to us and we try to put into place any extra measures that will help people access our sessions. We also run a Pay It Forward Scheme for anyone who needs some financial assistance to attend our groups.

As well as our weekly community sessions, we hold our *Big Special* sessions in July and December, with 100+ singers, a refreshments bar and lots of popular songs to bring everyone together for a fabulous evening of joyful celebration! These *Big Specials* are fundraising events as well, where we have raised several thousand pounds over the years for our two favourite Wokingham based charities The Link Visiting Scheme and First Days Children's Charity

Soph Tarttelin

soph@singforyourself.co.uk



BVRA Social Events

The Social team have taken a break during the summer but by the time you read this we will have held the Distributors' BBQ on August 17th. This is when we say 'thank you' to all those involved in the production, and distribution of the newsletter four times a year. We are grateful for their commitment, time and hard work to provide us with news, information and much more about our local area.

Our next event is the Quiz evening on Saturday October 5th in the Village Hall at 7.00 for 7.30pm. There will be a fish and chip supper and a licensed bar selling wine, beer, lager, and soft drinks.

Unchanged from last year, tickets cost £15 and can be obtained from Gill Powell social@barkham.org.uk

Teams are a maximum of 6, but if you don't have a team you will be able to join up with others on the night, so no problem.

This is always a very popular, fun and competitive evening and tickets sell quickly, so put the date in your diaries and order your tickets now.

For more details and reminders please look out for posters around the village, and check out the BVRA website or Facebook page.

Shirley Warner

My Life in Aviation

Tucked away looking out over the back garden, I spend most of my days on my computer, mainly cataloguing photographs of aircraft to sell on E-Bay.

Aircraft have always been a main interest in my life, from the time I learned to fly at Portsmouth Airport, aged 16; after A-Levels, I became an apprentice with the de Havilland Aircraft Company at Hatfield, finishing my apprenticeship with a degree in Mechanical and Aeronautical Engineering. After that, I worked at London Airport for a few years before becoming a writer on engineering topics. Firstly, I was the editor of a technical magazine on Civil Engineering, and then I signed up with a commissioning agency. One of my best commissions was with *The Daily Telegraph*, who paid me to write 3,000-word features on engineering for the man-in-the-street - subjects such as coal mines, oil rigs, Concorde, etc. All very interesting topics, well paid, with generous expenses as well.

So back to the photographs, which continue to astound me. I buy them in bulk at on-line auctions, then sell them individually, with a write-up of the aircraft and its service life if possible. They sell all over the world - just last week I sold an original wartime photograph of a Spitfire to Australia for £22.00. The buyer was the son of the pilot who was killed when he wrote off the aircraft in a bad landing in 1946. Some photographs achieve silly prices, sometimes in the £80-£90 region, but of course many just go for £5.00 or less. There seems to be no rhyme or reason why some photographs attract great interest while others are apparently of no interest at all!

John Lewis



The Avro York was a British transport aircraft developed during WW2, derived from the Avro Lancaster heavy bomber. The York saw service in military and civilian roles with various civil and military operators between 1943 and 1964. Large numbers of Yorks were used for air-supply missions during the Berlin Air Lift in 1948-49. A VIP version of the type was used as air transport for heads of state and government - VIPs who flew on Yorks included Winston Churchill, Charles de Gaulle, Indian Governor-General Lord Mountbatten and South African Prime Minister Jan Smuts.



The Airspeed Oxford was a twin-engine development of the company's Envoy airliner - built at Portsmouth, the prototype first flew in June 1937 and entered service with the RAF's Central Flying School in the November, becoming the RAF's first twin-engine advanced trainer. The first Oxfords were intended for all aspects of aircrew training including gunnery, although the turrets were removed from later versions and they were used mainly for pilot training. Oxfords were also used as air ambulances and communications aircraft, and saw widespread use as an advanced trainer in the UK, Canada, Southern Rhodesia, Australia, New Zealand and the Middle East. In 1951 they received a new lease of life for training National Service pilots.



The de Havilland DH.82 Tiger Moth was operated by the RAF as a primary trainer aircraft, with nearly 1500 built prior to WW2 and a total of nearly 9,000 built by the end of the war. In addition to the type's principal use for basic training, WW2 saw RAF Tiger Moths operating in other capacities, including maritime surveillance and defensive anti-invasion preparations, and some even functioned as armed light bombers. The type remained in service with the RAF until the early 1950s. Many of the military surplus aircraft subsequently entered into civilian operation, and remain in widespread use as recreational aircraft.

Glitch

In the Spring issue we ran an article about the experience of local resident, Pam Stubbs, and her part in the Post Office scandal – *Mrs Stubbs vs the Post Office*.

Now a play has been written about her experience and in late June I attended the premiere of *Glitch*. Produced on a budget with ingenious set changes, it features four actors playing a myriad of parts - Pam, her assistant, customers, other sub-postmasters/mistresses, Post Office staff, lawyers and judge. It was impressive to see how the actors jumped from one role to the next in an instant, as well as moving the scenery! It really captures the mood and, at times, of course, it is very moving, just as was the television dramatization.

The performance was in the intimate Minghella Theatre in the University of Reading. I understand that they are hoping for the play to be performed at a larger theatre in the future.

Here are Pam's observations:

I was delighted when I attended the performance of *Glitch*, every scene took me by surprise. I had visited the theatre on several occasions (by invitation, I have to add) during the months leading up to the performance.

We began with Students filling the roles and reading through their parts. They were a joy to watch, and I was amazed at the way they became completely immersed in the part they played. They wanted to know how it felt to be me going through the whole ordeal.

When I was invited back again, it was to meet the real cast and to watch them begin rehearsing, in a bare studio, with a few cardboard boxes and some chairs. It was a complete revelation for me to turn up and watch the actors, under the gaze of the Directors, make this bare studio come alive and be transformed into a Post Office, a Village Hall and a Court Room with so many different characters.

The script changed at almost every part of the rehearsals. How can you do that? Without forgetting the lines and keeping track of where you are in the plot. I decided that I would leave at that point so that there would be parts of this beautiful production that would be able to take me by surprise when I finally came to see it. I was not disappointed.

The whole production was sold out and I met so many people who had been to see *Glitch* on the strength of tiny flyers, all of them full of praise. I hope that it can go on and be performed again later this year. It deserves

all the success it has achieved so far and so much more. Thank you to Reading University for sponsoring this play, and also the two lovely ladies who managed to push it through, along with the Rabble Theatre Company and the professional cast

As I said when asked to write a brief introduction in the programme, all I did was get cross with Post Office and say "No".

Photography by Annabel Crichard Photography



“What You Got?” A Detectorist’s History of Barkham - Part 2



With the exciting discovery of the Queen Anne silver sixpence dated 1707 (see the last issue), Josie and I were inspired to keep searching our garden. Whenever we had an hour free (and when it wasn't pouring with rain) we ventured out, much to the great amusement of family and neighbours alike. The finds kept coming. Most were everyday objects, dropped or discarded; buckles and buttons, pieces of lead, bullets and shot. Some finds were very unexpected: cats' eyes from the middle of roads, furniture knobs and cutlery. Some finds were more special, eliciting shouts of glee from us when we realised what was appearing out of the muddy soil; a coin, a piece of jewellery, a musket ball or a military badge. All our finds are precious when we think that we are the first people to see and hold them for possibly hundreds of years.

Imagine my absolute disbelief when I discovered what looked very much like a Roman Coin (along the *Golden Path* of course!). I was so convinced that it must be a fake token dropped after a school trip to Fishbourne, I stuck it in my pocket and carried on detecting. Not until later that evening whilst cleaning up all the finds did I dare show a friend (and experienced detectorist). “That looks real to me”, she said...and suggested that I post on a Facebook

group specialising in Roman coins. The replies came back immediately...“Nice coin... definitely not a fake!”. It was soon identified as a *Nummus* of the Emperor Magnentius (350-353AD). Whether or not it was



dropped by a Roman soldier or by a collector in the 17th Century we will never know...but we were totally gobsmacked!

Josie and I now realised that, along with the Queen Anne Sixpence we found a few weeks earlier, we had to show it to our local FLO (Finds Liaison Officer). We also signed up to the Portable Antiquities Scheme (PAS) where finds from all over the country are registered and documented by the county FLOs.

I made an appointment and took my little bag of ‘treasures’ to Reading for him to examine.

Along with the Roman coin and sixpence we had found buttons, pot legs, bells, thimbles and buckles; all



staple finds for detectorists. He recorded the coins but not a lot else...treasure to us but not to him!

Over the last year we have been very lucky to have been given permission by some lovely neighbours and friends in Barkham and beyond to search on their land and have been amazed at the variety of finds.

It is important to note here that every piece of land in the UK belongs to someone and a detectorist MUST gain permission from the landowner to detect on the land.

From a commemorative coronation medal from 1902, to a World War 2 Belgian Franc to Victorian brooches, Georgian shoe buckles and gilt Dandy buttons. Anything over 300 years old should be shown to the

35 Years Ago

In Issue 9, we are up to six pages. In it there are more reminiscences about life in the village during World War 2. Note reference to the village hall being wooden. This hall was demolished after the new hall was opened in 1983.



NEW

AUTUMN 1989

IN LIVING MEMORY

The fourth in series of articles on recollections of Barkham from Bert Woolford and David Robins.

Barkham in the Second World War.

Believe it or not but Barkham was bombed during the second world war. The largest bomb fell in Rectory Lane next to a field gate, and there was a smaller one at the back of Sparkes Farm. Another bomb fell by the old Village Hall in Barkham Street.

The Rectory Lane bomb dropped at about 10.30 one night, David Robins and Tommy Holloway who worked with him at the Manor went out to look for it. It was a foggy night and while they could not see the damage it had done, they could smell it. The following morning they found a crater big enough to take 3 or 4 buses, but they never did find the five bar gate! Pieces of shrapnel ended up on Barkham Manor lawn, David kept a piece as a souvenir.

The Village Hall was badly damaged by the bomb which fell near it and until it's recent demolition the shrapnel marks could still be seen.

Proposed Rule 4.2 (Part only)
The General Committee shall con-

A group of village women in the A.R.P. used to meet at the Hall in the evenings so that if there was any trouble the wounded could be taken there. Nothing had happened for weeks, but as luck would have it, the women decided not to meet that night. The bomb took out one side of the Hall, which was of wooden construction, and damaged the roof!

Mrs Flowers was the landlady of The Bull during the war and she and Bert had a somewhat stormy relationship! During the war years she would not let anyone play the piano in the pub as it was out of tune. This upset the locals who enjoyed a sing-song and she would have lost all her customers except that it was a long way to go for beer anywhere else. When Bert got back from the war he opened the piano and pulled out a number of trays he'd put down the back of the piano before he left. He said he did it to give them something to remember him by in case he didn't come back. He was barred from the pub for some time.

local FLO after which they decide whether it should be recorded, returned or kept to go through the treasure process. We also show everything to the land owner (including the bags full of rubbish!) and if we were to find anything of huge value we would obviously share it equally. We have no plans to sell anything as we just love looking through it all as well as showing it to others and inspiring them to think about our local area in a different way. If you think there

might be some interesting history lying beneath your garden or field then please don't hesitate to get in contact as we'd be more than happy to come and have a look. You just never know...!

Gaynor and Josie White
Familywhite25@gmail.com
 07985046977

Our explorers in action!



Living well for longer

How often have you heard or said, 'It's my age' to describe a perceived flaw (note the word, perceived)? There's no denying that things change as we get older and that we can't stop the ageing process, but it is not all a fait accompli!

There is an element of perception, of which memory is a good example. We go into a different room with the intention of doing... erm, what was it I came in here for? We blame our age for our poor memory, and yet this example is so common that it has its own name: look up, *the doorway effect*. Changing rooms can lead to short-term memory loss – it's not an age thing; it's a human thing. And, if you've spent time around young people, you may have noticed they forget more than they remember when it comes to the tasks of daily life.

With health, it's easy to blame the advancing years for our ailments. Perhaps we weren't blessed with the greatest genes for health, but even then, somewhat unintuitively, the older we get, the less impact our genes have.

To illustrate this, in 2016, Prof. Stephen M. Rappaport authored a paper examining identical twins' health (and death) entitled *Genetic Factors Are Not the Major Causes of Chronic Diseases*. It showed that, on average, only 18.5% of chronic disease risk in later life could be attributed to genes.

I find this encouraging! It means that our healthspan is more within our control than perhaps we realise, with lifestyle weighing heavily.

Our lifespan is how many years we live, irrespective of our health, and healthspan is how many years we live in good health. Lifespan is still in the realm of research, but we know a lot about healthspan.

I describe the tools of healthspan through five pillars

and the supporting environment, most of which you'll be familiar with.



Perhaps you're in great shape, and it comes naturally to focus on a health-promoting lifestyle. But, if not, pick an area, and work on one thing you can do well to improve it. Once you've conquered that over a few weeks, pick another.

For example, perhaps you have a habit of snacking late at night (part of the timing of nutrition). Once you become aware of it, you can plan for something different, making active choices like examining your evening meal for food that can help you feel satisfied for longer, such as good-quality protein and fibre.

There are so many things we could do; the trick is finding the ones that fit your way of life that you can keep doing. It's not about perfection; it's about consistency, and it's never too late to start.

Mark Quirk MSc
Healthspan Coach in Barkham
www.PrimaryPrevention.co.uk



Alan's Patch

It's getting repetitious commenting on the strange weather we've been having!

I'm noticing fewer insects this year. This is having some unusual effects. There has been very little damage to the gooseberries from the infuriating sawfly and there has been little sign of black fly on the broad beans, which incidentally have grown taller



this year than any in the past, about five feet high, and from a Spring sowing too. This is one benefit of the wet summer. The crop has been fantastic and I've frozen plenty for the winter.

Finally, so far, there appears to be little evidence of codling moth damage to the apples. It's nice to have a few winners!

On the other hand, there has been poor germination of carrots and parsnips, despite several sowings.

With it being so wet it's been a good year for the slugs that wrecked many seedlings in the greenhouse, meaning I had to re-sow some and so far I've yet to eat a courgette.

The peas were slow to germinate but are now in full flow. This year I have been able to protect them from the pigeons successfully. The runner and French beans are cropping extremely well, if rather

late.

With it being so wet, it's been another good year grass, lawns and, of course, weeds! There have been so many more weeds between my block paving than usual!

During the winter I replanted some two year old summer raspberry canes and they have shown their appreciation with excellent growth and crop.

Last week I mowed the lawn and



rebuilt one of the compost heaps and, in the process, I disturbed a grass snake and a family of about five slow worms but they moved too fast for me to photograph them!

Next weekend I hire a tractor and mower to mow the field behind me.

Below is a passion flower. It has such a beautiful complex flower.



- Quiz Answers**
1. Ramsay MacDonald. Congratulations on your longevity if you remember him in your lifetime!
 2. Seven – Macdonald, Atee, Wilson, Callaghan, Blair, Brown and Starmer.
 3. Hendon was won by the Labour candidate, David Pinto-Duschinsky, with a majority of 15 votes! Your vote really does count, sometimes!
 4. Albania - Nedim Bajrami scored after just 23 seconds against Italy
 5. Czechia with two red cards. They also received 13 yellow cards, despite playing only three games and coming bottom of their group!
 6. Denmark in 1992. They were invited at about two weeks' notice to enter after Yugoslavia was expelled because of events in the Balkans.
 7. Both were played at the same stadium in Berlin built for Hitler's Olympics at which Jesse Owens won four gold medals. The stadium has, of course, been modernised since those days, and some of the symbols of the Nazis removed, but not all.
 8. Celine Dion sang this song made famous by Edith Piaf.
 9. Letsile Tebogo for Botswana beating the much fancied Noah Lyles
 10. Julien Alfred for St Lucia

- Where in Barkham?**
- It's between the fields along the footpath between Edneys Hill and the church.
- If you don't walk that path much then you should take the opportunity while you can, for this is the area in which the Solar Farm is to be built and some of the footpaths will be re-routed.

Finchampstead Flower Club

The club meets at California Hall on the fourth Monday of the month, 7.30 for 8pm. £6 per visit to include refreshments. We have had a busy time with demonstrations, a workshop where we learnt to make paper roses and a strawberry tea. In the autumn we are looking forward to sharing lunch in a member's garden and some excellent demonstrations. On 23rd September Caroline Golding will be demonstrating in California hall at 8pm and on 28th October Kathryn Austin will give us "Six of the best"!

By October, most of our tickets for the **November Open Evening** at Finchampstead Memorial Hall will be sold out. This is always a very popular event and often marks the start of Christmas demonstrations around the county. This year a National Demonstrator, Lucy Ellis, will be producing fabulous displays around the title "The Colours of Christmas" on 15th November.

Please phone the chair, Lis Barrett, 01189892092 or Elisabeth.barrett.email@gmail.com for further information on the club. You can follow our activities at <https://bbandoflowers.org.uk/clubs/finchampstead/> or on Facebook <https://www.facebook.com/Finchampstead-Flower-Club-2011434195620803/>

Kriss Turner

Finchampstead Flower Club

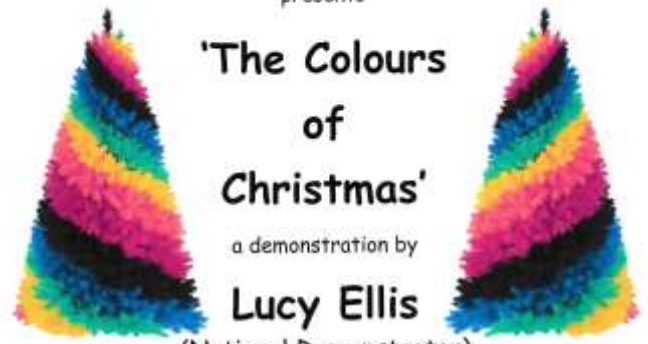
presents

'The Colours of Christmas'

a demonstration by

Lucy Ellis

(National Demonstrator)



Friday 15th November 2024 at
Finchampstead Memorial Hall, RG40 4JU

Doors open 7pm - Demonstration at 8pm
Raffle, Tea & Coffee, Mince Pies

For further information please
phone Bronwen on 0118 979 1618
or email Chris at chrisaedney@btopenworld.com

Tickets £15

SOTERIA PLANNING
YOU • FAMILY • BUSINESS

For You.
For your Family.
For your Business.

When was the last time you reviewed your Will?

Speak to **Leah Rickwood**
Your Soteria Planning Advisor

PROTECT WHAT MATTERS

Get in touch:

- lrickwood@soteriaplanning.uk
- 07735 587 456
- www.soteriaplanning.uk

SCAN THE QR CODE TO BOOK A MEETING WITH ME



The Ladies continue to meet each month with interesting Topics and Speakers, including a musical evening in July when Allan James entertained us with his collection of guitars, and we sang along to some old favourites!

The highlight of this year so far has been the annual BBQ held on August 7th. Sadly, we weren't able to eat outdoors, but 35 of us - Ladies, husbands and friends etc tucked into a tasty meal of chicken, beef burgers and sausages, along with a delicious array of salads all provided by some of the Ladies, followed by desserts. Jim, Laurence and Simon were our great Chefs, many thanks to them for all their expert cooking. A great great time was had by all, as the photos show.

Speakers have been booked for September, October and November, and the husbands and friends will be invited again in November for a 'Ghost Story'!

Shirley Warner (Chair)



involve

MAKING A DIFFERENCE LOCALLY
IN BRACKNELL FOREST & WOKINGHAM BOROUGH

Charities, community groups; do you need extra help now we're coming out of the pandemic? Your group has done so much to support your local community and maybe now you need some assistance. If you're part of a local group in Wokingham Borough or Bracknell Forest, you can get free help with funding, recruiting volunteers, growth of your group and recruiting new Committee Members or trustees. We also run a wide range of training in both areas, suitable for your volunteers and employees.

inVolve Community Services are there for any not-for-personal-profit organisation that needs those sorts of support. Contact us without obligation via 01344 304 404, reception@involve.community or look at <https://involve.community/>

CROWTHORNE Symphony ORCHESTRA

Our largest ever orchestra played one of the most challenging programmes for our Summer Concert, with two works by less familiar composers - Ethel Smyth and Frank Bridge - in the first half, while the second half was dedicated to Elgar's extraordinary Symphony No 1. It was a voyage of emotion for



audience and orchestra, from the stirring narrative of Smyth's 'Wreckers' plundering Cornish shipwrecks, and Bridge's dance journey inspired by march, ballet and waltz modes, before being immersed in the intensity of Elgar's

symphony. Thank you to a fabulous audience for coming - especially as the concert started at the exact time England beat Switzerland on penalties in the Euro football quarterfinals! (Sadly, the football didn't ultimately go to plan).

As we approach September and begin rehearsing for the new season of concerts, we have some wonderful music in store. The programme for our Autumn Concert on November 23rd at 7.30 at All Saints Church in Wokingham, will be a tribute to our lovely flautist, Kay Gibb, who sadly passed away earlier this year. It will include Jacques Ibert's Flute Concerto played by Kay's talented successor, Camille Curtis, as well as a specially composed piece in Kay's memory. We will also be playing Tchaikovsky's popular 'Capriccio Italien', Matthew Arnold's 'English Dances' and Arthur Bliss's 'Colour Symphony' – something to appeal to everyone we hope, with a mixture of well-

known as well as lesser-known pieces.



Tickets for the concert are available via the link on our website at £15 and as always 18s and under are free. There is an Earlybird discount if you purchase tickets before October 6th.

The orchestra has over 60 regular members rehearsing on Mondays in term time from 7.45-10pm at Oaklands Junior School, Butler Road, Crowthorne. Our website has information about concerts, past and future, and you can also sign up to receive our newsletter with details of events and special offers.

www.crowthorneorchestra.com

Chris Gadsby

local PAYG singing groups for fun and wellbeing



for your **self**

You don't have to be great at singing for singing to be great for you!

no judgement no pressure
no performances no expectations

Everyone is welcome!

for contact details & to find out more about our sessions, follow us online:
 f sing.for.your.self.group @sing.for.your.self
 soph@singforyourself.co.uk | www.singforyourself.co.uk

With bags of enthusiasm, Soph creates a welcoming environment of fun and trust in every session

check out our baby-friendly sessions!



scan me with your camera

www.singforyourself.co.uk

"I never imaged a singing group could be so **uplifting**; I have found a **renewed joy** for life and made **so many friends.**"



Following our sell-out Summer Concert of British folk music, madrigals and other popular songs in the newly-refurbished All Saints' Church, Wokingham Choral Society are looking forward to another successful season. This term we shall be rehearsing a programme of music by two giants of the English tradition, Purcell and Britten, which we will perform at Reading University's Great Hall on Saturday November 18th.

The programmes will include two anthems by Purcell, and a beautiful suite of short pieces by 20th/21st century British composers, sung by the Choir of St George's School, Windsor. Our combined choirs will then perform the centre-piece of the

evening, Britten's popular and striking seasonal work, *St Nicolas*.

If you are interested in joining our friendly choir, we warmly welcome new members in all voice parts and, if you'd like to give us a try, please contact our Membership Secretary at

<https://wokingham-choral-society.org.uk>



where you can find more information about us, plus details of our new season's concerts. We look forward to seeing you!

The Trinity Concert Band is excited to announce it will be performing an Oscars-themed concert on 21st September 2024 at the Reading University Great Hall. This concert will feature music from beloved films such as *Avatar*, *La La Land*, *The Lion King*, and many more.

For more details, view the full press release available on our website: <https://www.trinityband.co.uk/oscars-concert-press-release/>



WOKINGHAM CHORAL SOCIETY



COME AND SING WITH US!

Thursday 12th September 2024

7.30pm - 9.45pm

at The Emmbrook Senior School, RG41 1JP

Thinking of joining a choir? Come and join us for an open rehearsal. You will be most welcome. All music is provided. We rehearse every term time Thursday evenings, and give four concerts a year.

This term we are rehearsing the following programme for a concert in November at All Saints Church, Wokingham.

Britten: St Nicholas

Purcell O sing unto the Lord

Jehovah quam multi sunt hostes mei

We look forward to seeing you!

For more information please contact: membership@wokingham-choral-society.org.uk

<https://wokingham-choral-society.org.uk>

BVRA Committee



Vacant, currently rotating Chair
chairman@barkham.org.uk



Cathy Whittington
 Secretary
secretary@barkham.org.uk



Steve Young
 Treasurer
treasurer@barkham.org.uk



Alan Edwards
 Newsletter Editor
newsletter@barkham.org.uk



Dennis Eyrie
 DevWatch Coordinator
development@barkham.org.uk



Dave Clements
 Webmaster
webmaster@barkham.org.uk



Louise Goldring
 Membership
membership@barkham.org.uk



Gill Powell
 Chair of Social Team
social@barkham.org.uk



Shirley Warner
 Social Team
 Liaises with Barkham Village Hall

Newsletter Contributions

We welcome contributions to this newsletter either on a one-off basis, occasional or regular. We are keen to publicise any charity or events that may be of interest to Barkham residents. Please send them to the Newsletter Editor at newsletter@barkham.org.uk by the deadlines shown below.

Issue	Deadline	Distribution
Spring	9 th February	early March
Summer	10 th May	early June
Autumn	9 th August	early September
Winter	8 th November	early December

These are the second Fridays in February, May, August and November.

Advertising

The newsletter is produced quarterly. The Spring issue is sent to 800+ households in Barkham, and the other three to the households who are paid-up BVRA members, which is currently 400+.

We offer four sizes of adverts all of which include membership of the BVRA. All sizes are in mm. The prices are shown below and cover a whole year's advertising in our four issues.

Format	Advert size	Internal Pages	Back Page
Credit Card	60 x 50	£20.00	£30.00
Quarter Page	124 x 104	£50.00	£75.00
Half Page	190 x 130	£100.00	£150.00
Full Page	190 x 270	£200.00	£300.00

Please contact the Newsletter Editor to discuss your needs and supply your copy to newsletter@barkham.org.uk by the deadlines above.

Facebook



Facebook Group



Website



Membership

Membership of the BVRA costs £3 per year and entitles you to receive four issues of this magazine.

To join please make your payment using one of the following ways:

1. By Direct Debit: these can be set up by following the link below <https://barkham.org.uk/bvra/bvra-membership>



All direct debits are fully covered under the UK Direct Debit scheme.

2. By Bank Transfer: email us at membership@barkham.org.uk for details.
3. By cash, drop off your payment at one of our collection points around the village. Contact us at membership@barkham.org.uk for details.

Useful Contacts

Barkham Parish Council

clerk@barkham-parishcouncil.org.uk

Bearwood Primary School

<https://www.bearwood-pri.wokingham.sch.uk/web/>

The Coombes CE Primary School

<https://www.thecoombes.com>

The Bull at Barkham

0118 304 2029

<https://bullatbarkham.com/>

St James Church, Barkham

<https://www.abch.org.uk>

Finchampstead Flower Club

<https://bbandoflowers.org.uk/clubs/finchampstead/>

Dinton Walking Group

dintonwalkinggrp@yahoo.co.uk

Groups with Events at Barkham Village Hall

Barkham Village Hall Bookings

<http://hallbookingonline.com/barkham>

Art Class

Kay Young

kaycatlady65@gmail.com

Barkham Ladies Social Club

Shirley Warner 0118 978 9124

shirleyannwarner@gmail.com

Barkham Pre-School

Preschoolbarkham.net

preschoolbarkham@gmail.com

Bonsai Club

www.berkshirebonsai.co.uk

Dog Training

Lesley Slade 07885 899073

Martial Arts Class

Combat Academy UK

Andy Holmes 07783 206737

[https://facebook.com/](https://facebook.com/CombatAcademyUKBarkham)

[CombatAcademyUKBarkham](https://facebook.com/CombatAcademyUKBarkham)

Pilates Class

Vicky's Pilates 07729 783240

Simply Fit

Melissa Buckle

melissa@simplyfitberkshire.co.uk

Sunday Club

Julian Bidgood

office@abch.org.uk

Youth Club

David Horrocks

david.horrocks@abch.org.uk

BARKHAM DIARY

BVRA Events

05/10/24	BVRA Quiz Night	BVH	19:00
07/11/24	Annual General Meeting	BVH	19:30
13/12/24	BVRA Carols in the Park	Junipers	19:00

Monthly Events

1st Wed	Barkham Ladies Social Club	BVH	19:30
2nd Tue	Barkham Parish Council	AGCC	19:30
2nd Wed	Bonsai Club	BVH	19:30
4th Mon	Finchampstead Flower Club	CRH	20:00
2nd Tue	Dinton Walking Group Social	BVH	19:30

Weekly Events

Mondays	Pilates Class	BVH	10:00
Mondays	Dog Training	BVH	18:30
1st & 3rd Mon	U3A Group 2 Music Group	BVH	13:30
2nd & 4th Mon	U3A Group 1 Music Group	BVH	14:30
Tuesdays	Rainbows	BVH	16:30
Tuesdays	Sing for your Self (term time)	AVH	12:30
Tues-Fri	Barkham Pre-School	BVH	08:30
Wednesdays	Art Class	BVH	19:30
Wednesdays	Brownies	BVH	17:00
Thursdays	Pilates Class	BVH	18:00
Thursdays	Martial Arts Class	BVH	19:30
Fridays	Youth Club	BVH	19:00
Saturdays	Simply Fit	BVH	08:30

Special Events

21st September	Trinity Concert Band - Oscars-themed Concert The Great Hall, Reading University
16 th November	Wokingham Choral Society -Autumn Concert at All Saints Church, Wokingham
23 rd November	Crowthorne Symphony Orchestra at All Saints Church, Wokingham
14 th December	Wokingham Choral Society - Christmas Carol Concert All Saints Church, Wokingham

Location Codes

AGCC	Aborfield Green Community Centre
AVH	Arborfield Village Hall
BVH	Barkham Village Hall
CRH	California Ratepayers Hall
FMH	Finchampstead Memorial Hall

Please contact the editor to add or change this information

The BVRA Privacy Policy can be viewed at the foot of the Home page of the website, www.barkham.org.uk. Email or telephone numbers provided by members will be used only for BVRA communications or to receipt their annual subscription. Any member is free to see their details by contacting the Webmaster.

You can amend your mailing preferences or opt out at any time by clicking on the link at the foot of any of our emails or by contacting the Webmaster, email: webmaster@barkham.org.uk

The views expressed in this Newsletter, unless signed by a BVRA committee member, are not necessarily those of the Barkham Village Residents' Association.

Copyright ©2024 Barkham Village Residents' Association. Extracts may be reproduced provided the source is acknowledged.

Arborfield Tree Care 0118 976 1000



All aspects of Tree/Hedge work undertaken

Fully insured/ Free estimates

All Dangerous Work Undertaken

www.arborfieldtreecare.co.uk

Email: office@arborfieldtreecare.org

The Tree Company Others Look Up To

French Polishing

Furniture restoration of
antique or modern pieces

Dining and coffee tables given the
original finish

All removal damage and insurance work

Phone Mike on 07973 759091

www.working2help.co.uk

Vicky's PILATES

Body Control

'Pilates is the body conditioning class
suitable for all abilities and ages'

*By improving posture, reshape your body
relieve tension and create
a general feeling of well-being.
Pilates is medically recommended
to help relieve back pain and stress*

Call Vicky on 0118 989 2571 or 07729 783240



PRIMARY PREVENTION

A LIFETIME OF VITALITY



WWW.PRIMARYPREVENTION.CO.UK

COACHING FOR

HEALTHSPAN

- LIVING WELL FOR

LONGER



We are Open - New Management, New Team

Join us Weekdays, for Lunch

w: bullatbarkham.com/lunch t: 0118 304 2029